



Slcompact Hot Water
Heat Interface Units

www.rhico.co.uk

Rhico | Slcompact

Hot Water Heat Interface Unit

Slcompact

DESCRIPTION

Compact dimensions, maximum performance

The Rhico Slcompact is a hot water only HIU designed to operate with extremely low primary temperatures to reduce heat loss and increase system efficiency. This instantaneous hot water module uses a stainless steel plate heat exchanger to produce a maximum flow rate of 24 litres per minute at 55 degrees C. The temperature of the water is controlled by a thermostatic mixing valve on the primary circuit reducing or increasing flow rate until the desired temperature is reached. The unit can be supplied with either a pump, placed on the primary circuit which is activated by a signal from a flow switch on the domestic hot water pipework or a differential valve. Optional extras include a heat meter for individual billing purposes and a secondary hot water return kit.

BENEFITS

- Compact module 330mm x 450mm x 120mm
- Preassembled and tested
- Wall hung or built in versions
- Shut-off valves both on primary and secondary circuit
- Reduced maintenance
- Easy setting of DHW temperature
- Large hot water production
- Modulating flow rate via the thermostat mixing valve on the primary circuit
- Secondary return kit available
- Designed for the optional installation of a heat meter (primary circuit)
- Optional pump or differential valve
- Low primary temperatures



Illustrated with all insulation removed

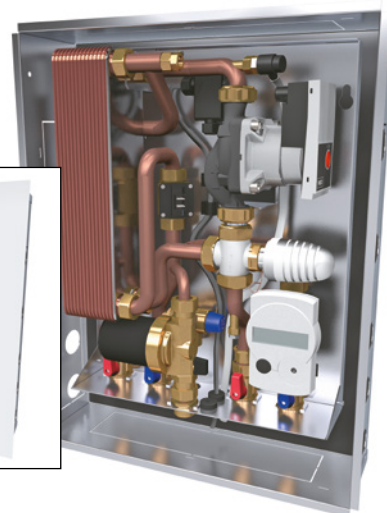
Slcompact Hot Water HIU

Slcompact

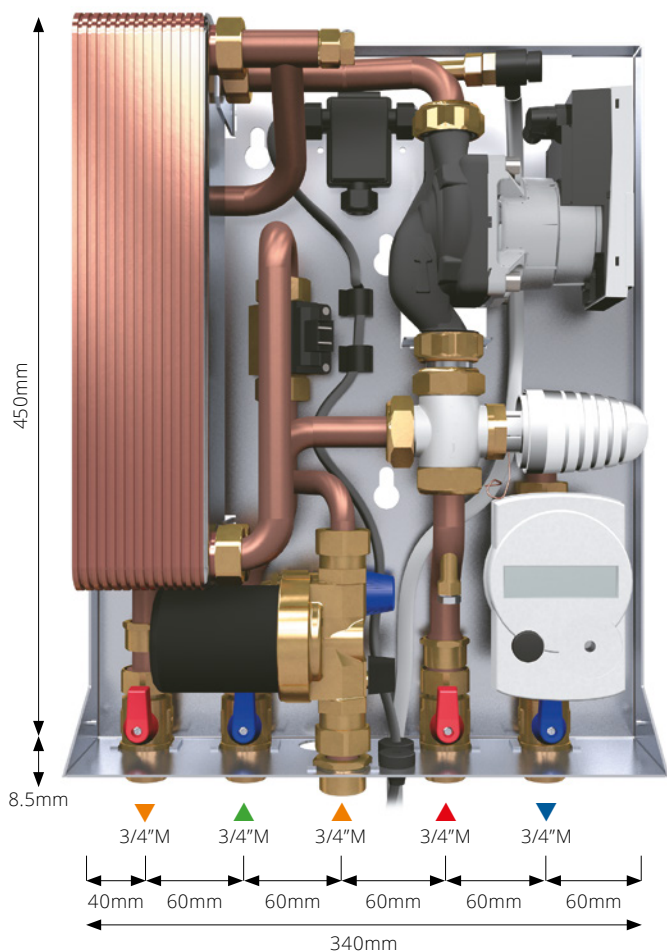
49060390
Wall-hung version
450 x 340 x 120mm



49060391
Built-in version
500 x 400 x 110mm



Dimensions and Connections



Technical Data

Max. flow rate of primary flow	1450 l/h
Max. flow rate of secondary outlet (DHW)	28 l/min
Pressure loss DHW circuit (28 l/m ³)	0.48 bar
DHW temperature set	40-55°C
Min. flow rate DHW production on/off	2.5 ± 0.3 l/m
Exchange surface of plates exchanger	0.708 m ²
Power supply	230 V AC 50/60 Hz - 45 W
Max. working pressure	10 bar
Wall-hung box dimensions	340 x 450 x 120
Built-in box dimensions	400 x 500 x 110
Max. temperature	90°C
Connections	G 3/4"
Pump/Differential valve	Wilo YONOS PARA RS 15/1-6 Differential valve: TBA

Optional components

Pump of DHW recirculation	Lowara/Xylem EB 15-1/94 R
Eyron Ultra CFMUS Ultrasonic M-BUS Qn 1.5 m ³ /h - 110 x 3/4"	1.5 m ³ /h - CL 2 - 110mm x 3/4"



Ultrasonic M-BUS heat meter

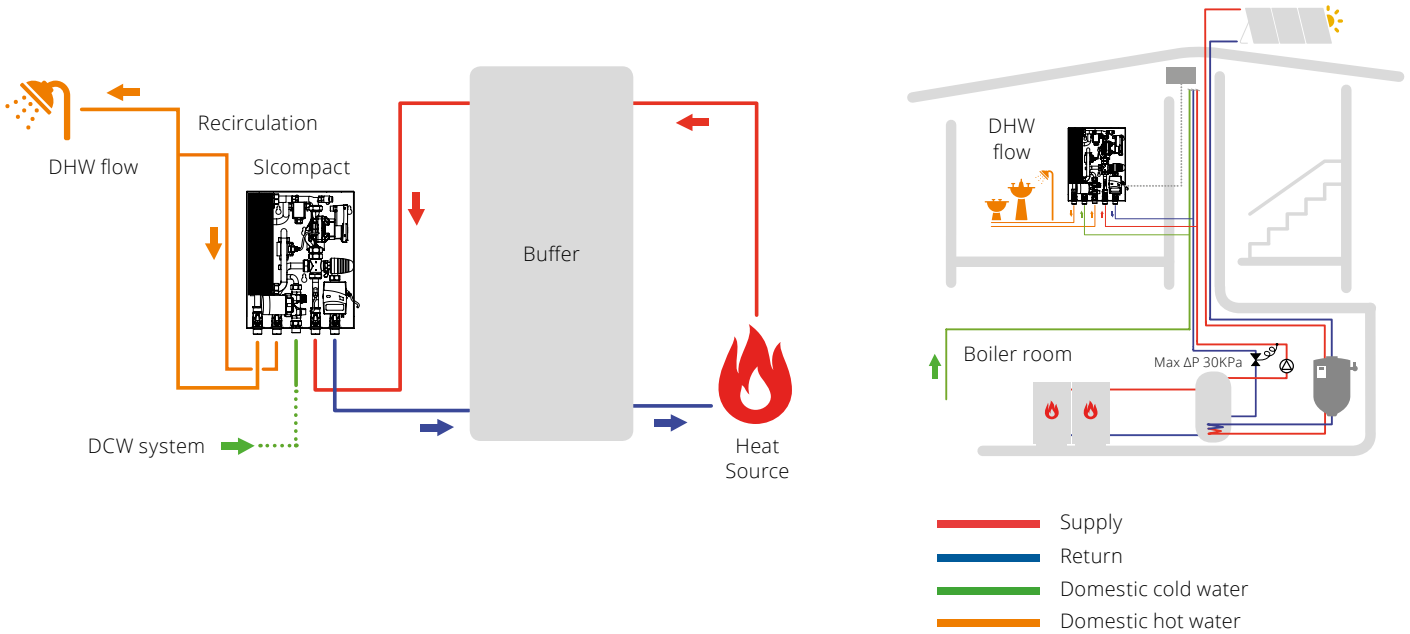


Recirculation pump

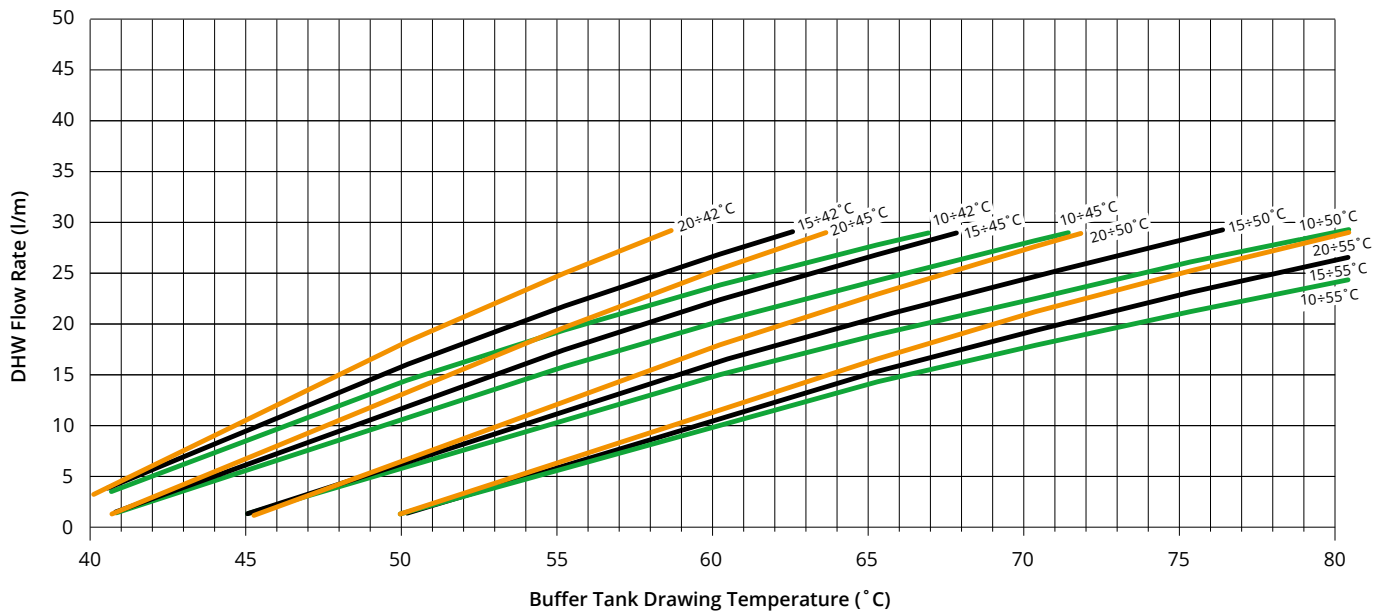
Slcompact Hot Water HIU

Slcompact

Examples of use



DHW Production

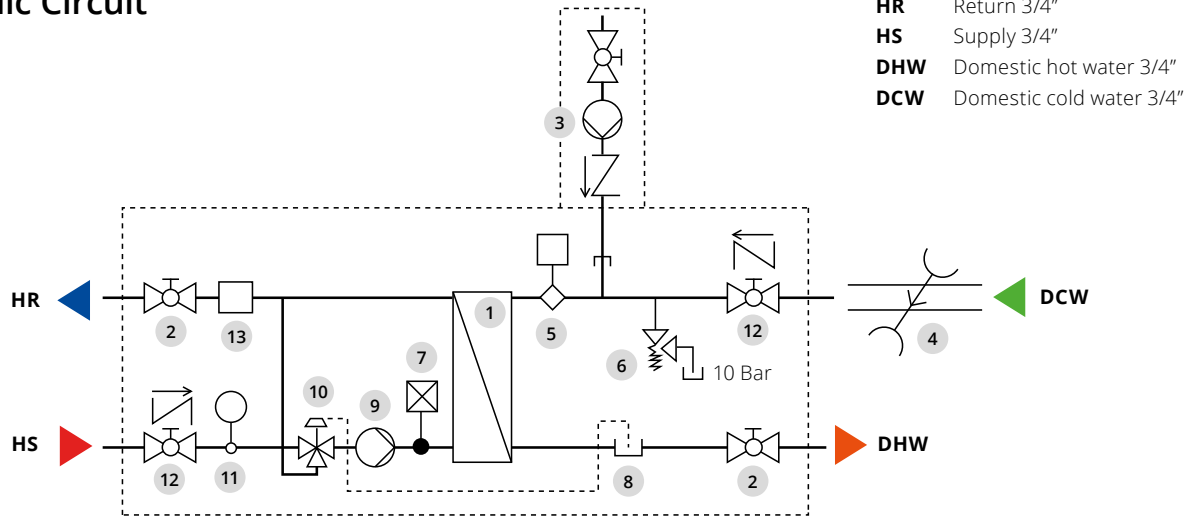


The proper working of the system is guaranteed if the temperature of the primary flow exceeds at least 5°C the temperature of the stated DHW set.

Slcompact Hot Water HIU

Slcompact

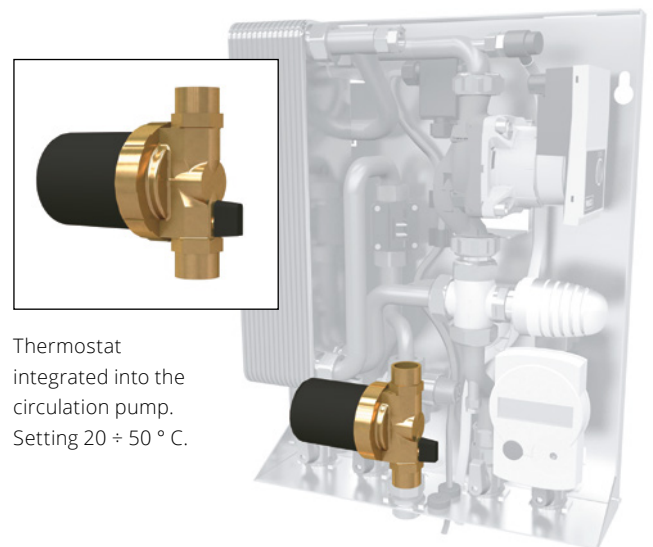
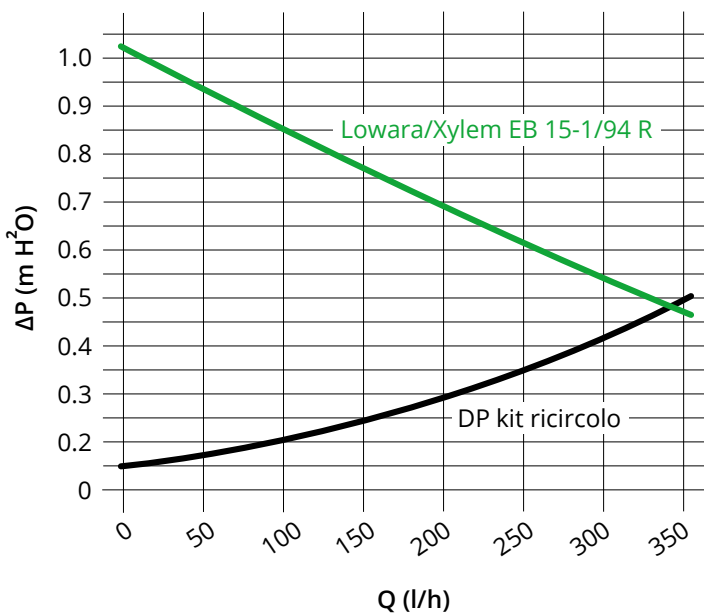
Hydraulic Circuit



COMPONENTS

- 1. Insulated brazed plate iron steel heat exchanger
- 2. Ball valve
- 3. Secondary return with ball valve and pump with check valve
- 4. Water main
- 5. Flow switch
- 6. Safety valve (10 bar)
- 7. Manual air vent
- 8. Sensor pocket for thermostatic actuator
- 9. Primary pump / differential valve
- 10. 3 way mixing valve with thermostatic actuator
- 11. Sensor pocket for energy meter sensor
- 12. Ball valve with check valve
- 13. Fitting piece for energy meter

Characteristic Curves Recirculation Pump





Aviation Business Park, Enterprise Close,
Christchurch, Dorset, BH23 6NX

T: 0800 975 0795 E: info@rhico.co.uk

www.rhico.co.uk